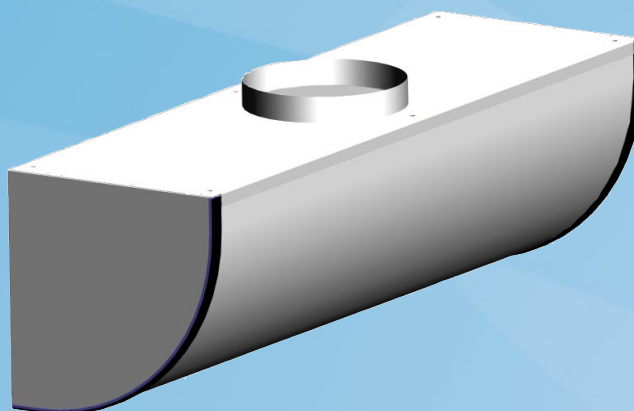


AFK

Low Velocity Supply Unit



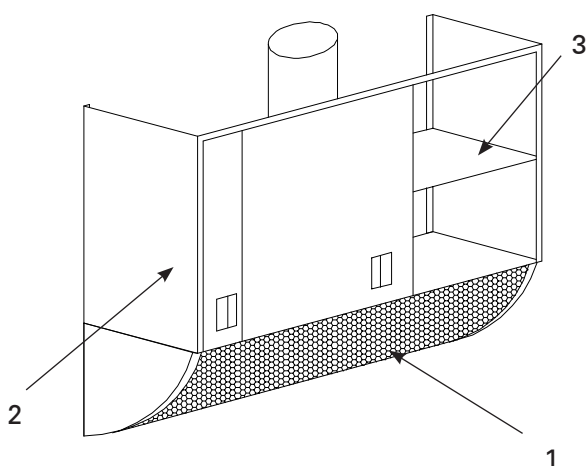
- Horizontal low velocity air supply
- Installation in corner of the space at ceiling level; flow pattern in an angle of 90 degrees.
- Detachable front panel and metallic internal structure enable cleaning of the unit and ductwork
- Circular duct connection with integral gasket on the top/back

Product Models & Accessories

- Model with stainless steel (18 ga.) design
- Model with thick front panel
- Duct cover
- Installation cabinet

MATERIAL AND FINISHING

PART	MATERIAL	NOTE
Front panel	Perforated galvanized steel	Stainless steel 18 ga. as an option
Casing	Galvanized steel	Stainless steel 18 ga. as an option
Flow equalization element	Galvanized steel	
Cover strip	Plastic PVC	
Coupling sleeve with gasket	Galvanized steel	Gasket of rubber compound
Installation cabinet (optional)	Galvanized steel	Stainless steel 18 ga.
Duct cover	Galvanized steel	
Finishing	Polyester-epoxy-painted RAL 9010 /30% gloss	Special colors available



	CODE	DESCRIPTION
Duct cover (1)	DC	For covering the ductwork standard length 39.37", 59.05", or 78.74"
Installation cabinet (2)	AS	Optional for installation of the unit length 36" - 48"
Cabinet shelves (3)	S	Optional for unit equipped with installation cabinet.

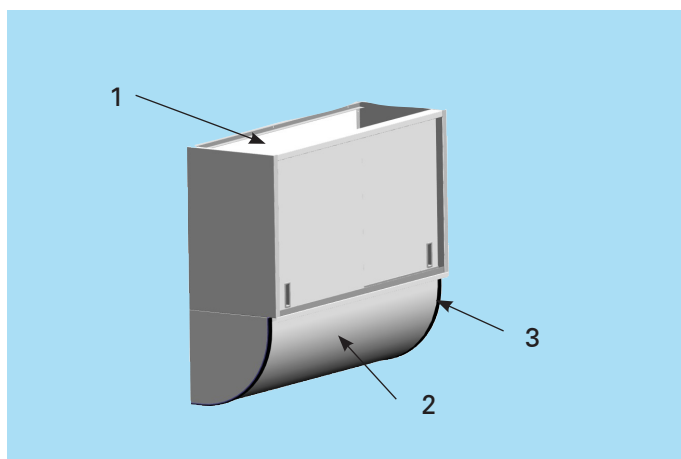
Product Options & Accessories

Product options

- Model with stainless steel (18 ga.) design
- Duct cover (DC) made of perforated steel
- (same as AFK)
- Smaller than standard duct connection of the unit
- Thick front panel
- Cover strip in white, grey, or black color
- Installation cabinet of 18 ga. stainless steel

SOUND LEVEL DATA, SUPPLY

	q_v (cfm)	Δp_{st} (in.WC)	Δp_{tot} (in.WC)	F (Hz)								L_{pA} [dB(A)]	NR	NC
				63	125	250	500	1000	2000	4000	8000			
AFK-100	55	0.05	0.07	40	24	26	30	22	10	3	18	25	22	20
	68	0.07	0.11	41	25	30	34	29	19	10	19	30	26	25
	83	0.10	0.16	42	26	34	38	36	28	17	20	35	32	30
	97	0.14	0.22	41	27	37	42	41	35	23	21	40	37	35
AFK-125	85	0.06	0.09	30	22	30	29	22	11	5	19	25	22	19
	102	0.09	0.13	31	26	34	34	29	20	12	20	30	26	25
	121	0.13	0.18	32	30	37	39	34	28	17	22	35	31	29
	142	0.18	0.25	32	31	40	43	40	36	22	22	40	36	35
AFK-160	148	0.04	0.08	40	26	32	28	22	11	3	18	25	21	18
	180	0.07	0.11	41	29	35	33	29	21	9	19	30	25	24
	216	0.10	0.16	42	31	37	38	35	29	17	20	35	31	30
	256	0.14	0.22	42	33	40	41	41	36	25	21	40	37	35



Function

Air is supplied into the space through the front panel of the unit, normally at a slightly lower temperature than the room air temperature.

The supply air flows down to floor level and gradually pervades the occupied space at low velocity, the air rises as it comes in contact with heat sources within the occupied zone. The low velocity flow pattern is directed forwards. Openable and cleanable unit with non-clogging design.

Note: The flow pattern data is for a unit installed flush with wall at ceiling or just below ceiling level if used with cabinet..

Servicing

CODE DESCRIPTION

1	Installation cabinet open to ceiling
2	Front panel
3	Cover strips

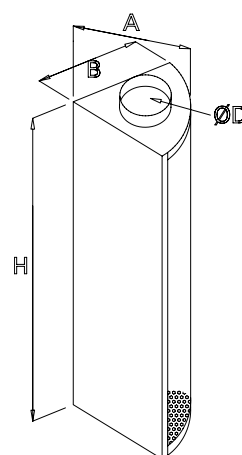
Open the front panel (2) by first removing the cover strips (1) and unscrewing the screws. Pull out the front panel. If required, the flow equalization element (3) can be detached by unscrewing the fixing screws. Pull out the equalization element.

Wipe the parts with a damp cloth, instead of immersing in water. Reassemble after cleaning in reverse order.

DIMENSIONS

Model	B	H	A	ØD
100	7.87"	23.62"	8.62"	3.94"
125	9.05"	23.62"	9.84"	4.92"
160	10.63"	31.50"	11.53"	6.30"
200	12.79"	47.24"	13.78"	7.87"
250	15.16"	47.24"	16.22"	9.84"
315	18.50"	59.05"	19.37"	12.40"

- AS/AFK installation cabinet:
height = 36"-48"



Installation

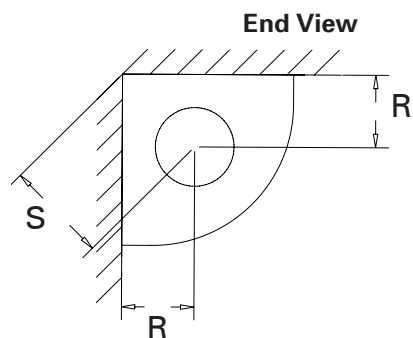
Perform the installation in the numerical order.

1. Fix mounting brackets (4 places) to low velocity unit.
2. Remove plastic cover strips from unit.
3. Locate unit against wall and secure through mounting brackets.
4. Fix duct cover support brackets to wall between unit and ceiling.
5. Position (AS) installation cabinet (if equipped) above AFK unit and position in place as shown in drawing below unit.

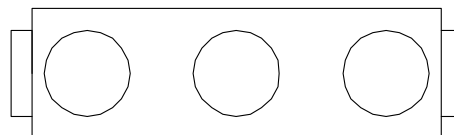
6. After installation of ductwork, locate DC duct cover as follows :

Locate DC duct cover section on top flange of AFK unit and firmly push into support brackets fixed to wall.

7. Secure DC duct cover with screws through cover into support brackets.
8. Re-fit plastic cover strips between DC duct cover and AFK unit, and between AS cabinet and AFK unit by bending strip back and pressing bead into groove in flange, as shown in diagram below.
9. When multiple sections of DC duct cover are used plastic cover strips are provided.

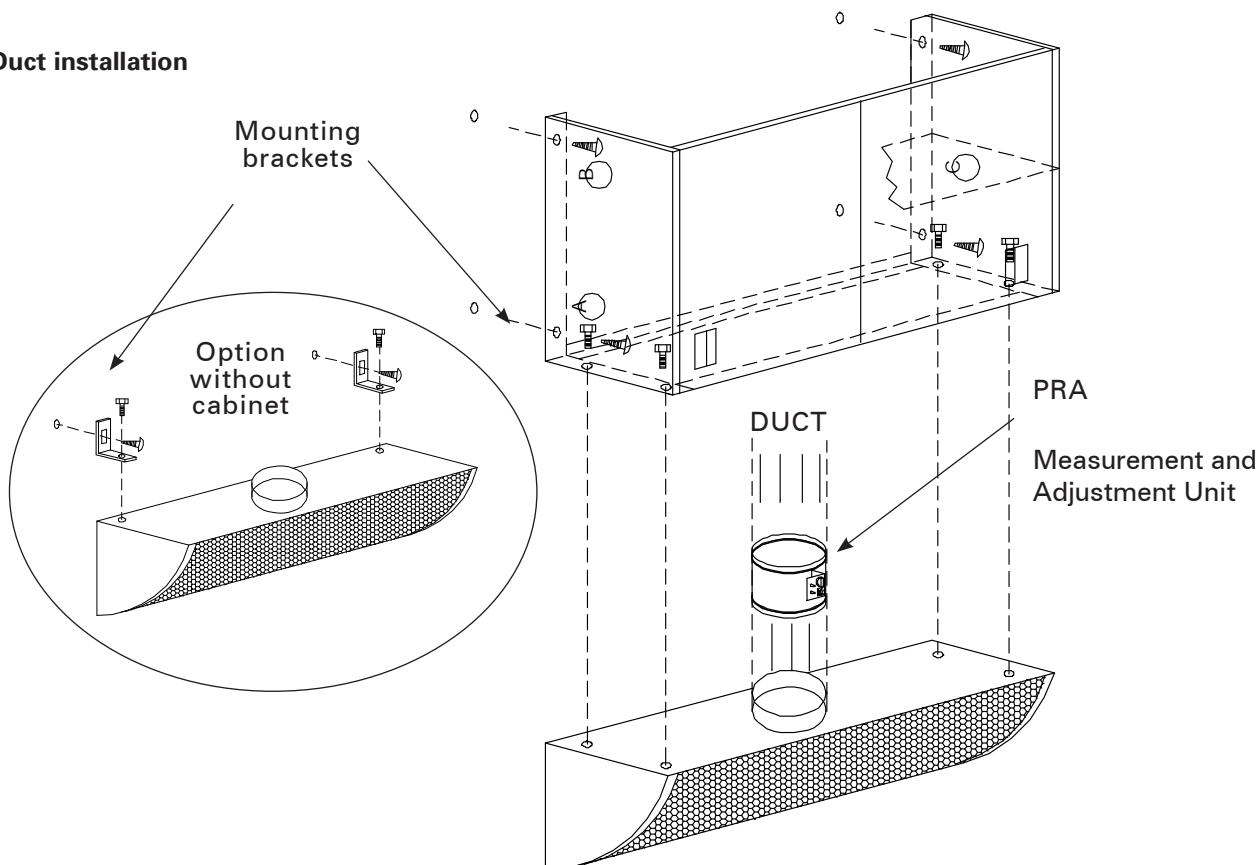


Top View of optional duct locations



AFK	R	S
100	3.43"	4.84"
125	3.90"	5.51"
160	4.21"	5.95"
200	5.31"	7.52"
250	6.38"	9.02"
315	7.64"	10.78"

Duct installation



Suggested specifications

The low velocity unit shall be made of power coat epoxy-painted galvanized steel, with white (RAL 9010) color.

The unit shall have a sturdy maintenance-free, non-clogging structure.

The unit shall comprise of a detachable, perforated front panel and a hygienic internal fixed flow equalization element.

The unit shall have a circular duct connection at the top, or bottom, depending on where the unit is located.

Mounting brackets shall be included with the delivery.

Option

The unit shall be equipped with a duct cover, installation base and/or colored cover strip where required.

The front panel of the unit shall be made of 18 gauge stainless steel, or galvanized steel and power coat paint RAL color choices are available.

Product code

AFK/D

D = Diameter of duct connection
100, 125, 160, 200, 250, 315, 400, 500, 630

Specifics and accessories

MA = Material

CS Steel
AS Stainless steel

TP = Front panel thickness 18 ga.

CO = Color

W White
X Special color

CP = Plastic Strip Color

W White
G Grey
B Black

DC = Duct Cover

AC = Accessories

AS Installation cabinet

PRA Adjustment and Measurement Unit

Code example

AFK	200	+ AS	+ DC xxx	+ PRA
1	2	3	4	5

- | | |
|---|-------------------------------------|
| 1 | Product type |
| 2 | Nominal size (Collar size) |
| 3 | Installation cabinet (AS) |
| 4 | Duct cover (DC) and length (xxx) |
| 5 | Adjustment and measurement unit PRA |